



# A Survey on Malaria and Dengue Detection Using Android Phone

<sup>1</sup>Rupali Misal, <sup>2</sup>V.S.Kukarni

<sup>1</sup> Electronics and Telecommunication, Smt. Kashibai Navale college of Engg. Vadgoan Pune, India  
Email: <sup>1</sup>misalrupali6@gmail.com, <sup>2</sup>vaishan@rediff.com

**Abstract**— Intestinal malaria sickness is a mosquito-borne overwhelming pain affecting people and unmistakable creatures accomplished intestinal sickness is a mosquito-borne overwhelming distress affecting people and particular creatures accomplished by parasitic protozoans having a place with the plasmodium. Besides, Dengue fever is a mosquito-borne tropical affliction made by the dengue disease. Appearances ordinarily begin three to fourteen days after defilement. This may incorporate a high fever, migraine, spewing, muscle and joint torments, and a trademark skin rash. Recuperation for the most part takes two to seven days. In a little extent of cases, the sickness forms into the life-debilitating dengue hemorrhagic fever, bringing about dying, low levels of blood platelets and blood plasma spillage, or into dengue stun disorder, where perilously low pulse happens. This paper depicts a brisk and solid cell phone android cell phone android application platform for blood picture examination and jungle fever analysis. This system relies on upon Annular Ring Proportion Technique which is starting at now completed. The method recognizes the Red Platelets (RBCs), White Platelets (WBCs), and perceives the parasites in the polluted RBCs. At the result we will get the effective of intestinal ailment.

**Keywords**— malaria, dengue, RBC, WBC

## I. INTRODUCTION

Intestinal sickness, once in a while called the "Lord of Ailments", is achieved by protozoan parasites of the family Plasmodium. The most genuine and infrequently deadly sort of intestinal sickness is brought on by Plasmodium falciparum. The other human intestinal sickness species, P. vivax, P. ovale, P. malariae, and now and again P. knowlesi can bring about intense, extreme disease however death rates are low. Malaria fever is the most essential irresistible illness in tropical and subtropical locales, and keeps on being a noteworthy worldwide medical issue, with more than 40% of the total populace presented to fluctuating degrees of intestinal sickness hazard in around 100 nations. It is evaluated that more than 500 million people experience the underhanded effects of wilderness fever afflictions yearly, achieving around 1-2 million people.

The number of malaria fever cases overall is by all accounts expanding, because of expanding transmission chance in zones where intestinal sickness control has declined, the expanding predominance of drugresistant

strains of parasites, and in a moderately few cases, gigantic increments in worldwide travel and movement . The requirement for successful and viable diagnostics for worldwide jungle fever control is expanding, since compelling analysis decreases both confusions and mortality from intestinal sickness. Separation of clinical analyses from other tropical contaminations, in view of patients 'signs and side effects or doctors' discoveries, might be troublesome. In this manner, corroborative findings utilizing research center advancements are desperately required. This survey talks about on the present accessible Symptomatic strategies for jungle fever in numerous settings, and evaluates their achievability in asset rich and asset poor settings. Conclusion OF MALARIA Prompt and precise finding is basic to the viable administration of jungle fever.

The worldwide effect of jungle fever has prodded enthusiasm for creating viable analytic procedures not just for asset constrained regions where intestinal sickness is a significant weight on society, additionally in created nations, where malaria diagnostic is often lacking The dengue infection, an individual from the variety Flavivirus of the family Flaviviridae, is an arthropode-borne infection that incorporates four distinctive serotypes (DEN-1, DEN-2, DEN-3, and DEN-4).The World Well Being Association (WHO) consider dengue as a significant overall general prosperity challenge in the tropic and subtropic nations. Dengue has seen a 30-overlap upsurge worldwide in the vicinity of 1960 and 2010, because of expanded populace development rate, an unnatural weather change, spontaneous urbanization, wasteful mosquito control, visit air travel, and absence of medicinal services facilities. Two and a half billion individuals live in dengue-endemic regions and around 400 million contaminations occurring every year, with a death rate outperforming 5–20% in some areas. Dengue disease influences more than 100 nations, including Europe and the United States (USA). Dengue virus infection exhibit varied clinical introduction, subsequently, accurate diagnosis is difficult and relies on laboratory confirmation

## II. MOTIVATION

Wilderness fever is a deadly disease and the present survey by the World Prosperity Affiliation (WHO) has

evaluated that intestinal issue causes more than 200K occurrences of fever reliably.

- The diagnosis of the disease requires intense and costly instruments inaccessible for the poorest nations of the world, where regularly the malady is endemic. Microscopic malaria analysis is, by a wide margin, thought to be the best effective diagnostic method, however it is highly tedious and work intensive.
- The research will concentrate on the advantages it can accommodate the effective determination of intestinal sickness, dengue and the supportive treatment.

### III. OBJECTIVES

The objective of this paper is given below

- The main objective of the research is to successfully send the information on mobile platform without the loss of information integrity, with minimal memory footprint on the mobile phone. The results have to be the same as the Matlab output, as well as keeping to an acceptable processing speed and duration.
- A fast and reliable method for mobile phone getting result of blood image analysis and malaria diagnosis.

### IV. LITERATURE SURVEY

In literature, the problem and the previous techniques of malaria and dengue is described

**1. V. V. Makkapatti and R. M. Rao, "division of intestinal sickness parasites in fringe blood spread pictures "Procedures of IEEE Universal Meeting on Acoustics Discourse and Flag Handling, I CASSP 2009, pp. 1361 - 1364, Apr. 2009.**

In this paper a method for recognizing the malaria for blood platelet pictures. This paper includes the checking of Blood cell utilizing an adaptive OTSU Thresholding method. Which use to portion the picture and separate the RBC and WBC for Counting? The paper likewise considers the zone of cells to proclaim severity. The paper utilizes SVM as Classifier for pronouncing the consequence of whether the patient is influenced by Malaria or Not. The proposed computerized strategy for segmentation and order of cell is basic. An approach is proposed to recognize red platelets with back to back grouping into parasite contaminated and ordinary cells for estimation of parasitemia. The extraction of red platelets accomplishes a dependable execution and the real classification of contaminated cells. Affectability of framework is 93.12%, and Specificity is 93.17%. Shape based and measurable components are produced for arrangement. The elements are chosen for acknowledgment of two classes as it were. This approach prompts to the high specialization of every classifier and results in an overall increase in accuracy. [1]

**2.2. Ravi raja, g. Bajpai Also s. Sharma, "Examination of identifying those intestinal sickness**

**parasite contaminated blood pictures utilizing measurable built Approocft " IFMBE Proceedings, third kuala lumpur universal gathering ahead biomedical building 2006,vol. 15,p craftsmanship 12,pp. 502-505,2007.**

This paper presents a blood picture preparing for identifying and characterizing malarial parasites in pictures of Giemsa recolored blood slides, with a specific end goal to assess the parasitemia of the blood. To recognize the red platelets that are tainted by malarial parasites, measurable based approach is utilized. To isolate naturally the parasites (Trophozoite, Schizonts and gametocytes) from whatever is left of a tainted blood picture, shading, shape and size data are utilized and later the picture is contrasted and contaminated pictures after change of picture by scaling, molding to reproduce the picture. The pictures returned are factually broke down and contrast with produce a mathematical base. Likewise the assessment of the size and state of the cores of the parasite is additionally considered. [2]

**3. Abdul Nasir, A. S.; Res. Bunch, Univ. Malaysia Perlis, Arau, Malaysia , Mashor, M.Y. , Mohamed, Z "Division based approach for location of intestinal sickness parasites utilizing moving k-implies grouping" 2012.**

In this paper author utilized Associate in Nursing unsupervised shading picture division of protozoal contamination parasites exploitation moving k- means (MKM) cluster run the show. It's been connected on protozoal contamination pictures of P.vivax species. The arranged division strategy gives an essential stride to identification of the nearness of protozoa infection parasites in thin blood smears. With the point of getting the absolutely segmental red platelets tainted withprotozoal disease parasites, the protozoal contamination pictures can principal expanded by exploitation the partial distinction extending strategy. At that point, the MKM cluster run has been connected on the immersion and power parts of HSI (hue, saturation, intensity) shading zone for dividing the tainted cell from the foundation. From that point forward, the segmental pictures are handled exploitation middle channel and seeded area developing space extraction calculations for smoothing the picture and expelling any undesirable areas from the picture, severally. At last, the openings inside the infected cell region unit packed by applying district filling bolstered morphological reconstruction rule. [3]

**4. Muda, T. Z. T, Sch. About media Technol. & Commun. , Univ. Utara Malaysia, Sintok, Malaysia; Salam, r. An. "Blood Mobile picture division utilizing mixture K-means and median-cut algorithms" 2011.**

In this paper the blood corpuscle image analysis, division is an essential stride in quantitative photometry. Blood corpuscle pictures turned out to be outstandingly useful in restorative solution apparatuses for cases including blood. Amid this paper, we tend to bless a greatly improved approach on consolidating division

calculations of K-means and Median-cut for shading platelets pictures. Middle slice procedure will be used once examination best results from Fuzzy c-implies, K-implies and Implies move. We have a tendency to utilized blood corpuscle pictures tainted with malaria parasites as cell pictures for our examination. The results of arranged system demonstrates higher change as far as question divisions for any feature extraction technique. [4]

**5. Mandal, S. ; Sch. Of med. Sci. & Technol. , indian inst. For Technol. , Kharagpur, india ; Kumar, a. ; Chatterjee, j. ; Manjunatha “Segmentation for blood smear pictures utilizing normalized cuts for identification for malarial parasites” 2010.**

This paper introduces an improved standardized cut procedure for division of RBCs tainted with protozoal contamination parasites exploitation fringe blood smears. The govern is connected over shifted shading zones to seek out its Best execution for minuscule blood spread pictures. We tend to test the viability of winds up in RGB, YCbCr, HSV and NTSC exploitation the Rand\’s Index. The work is advantageous in telepath ology applications and may automatise the screening of protozoal contamination in rustic zones wherever help work constrain is banished [5]

**6. Halim, What's more, the lion's share of Corps parts don't stay in their starting work areas once their comm.; Sch. From claiming Comput. Eng. , Nanyang Technol. Univ. , Singapore; Bretschneider, t. ; Li, Y. ; Preiser, p. R. “Estimating intestinal sickness parasitemia starting with blood smear Images” 2006.**

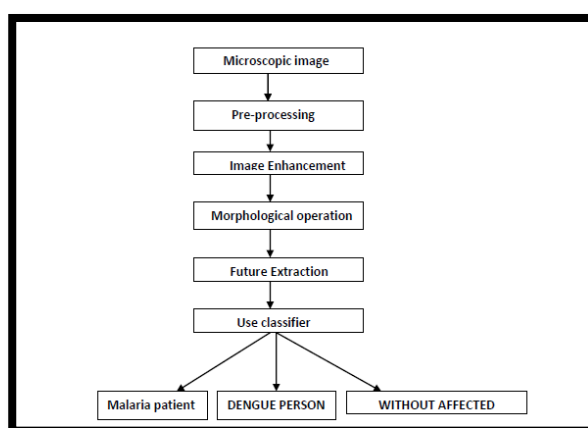
In this paper a way is made arrangements for estimating parasitemia from blood spread pictures by removing sound and parasite contaminated red platelets. The created approach represents uncertain imaging conditions accordingly of magnifier settings still on the grounds that the nature of the blood spread planning. The appropriate response depends on a multi-organize estimation method with marginal past data extending from a model delineation of red platelets. Bolstered pattern matching with parameter improvement and cross-approval against the normal organic qualities, red blood cells region unit decided. Amid a closure, the parasitemia live is administrated by parceling the spotless Associate in Nursing tainted cells exploitation an unsupervised and compared a training-based technique. [6]

**7. Sarach Tantikittil, Sompong Tumswadi, Wichian Premchaiswadi doctoral level college for data improvement Siam school Bangkok, Thailand' image get ready to identification of dengue infection In view of WBC order What's more choice Tree'2015 Ict and taking in planning thirteen meeting.**

This paper introduces to dengue detection based on the WBC. By using the Hematological Test. In this A Hematocrit (Hct) and a complete blood count (CBC) are

Common methods used for diagnose acute dengue infection Hematocrit is the blood concentration level. Also dengue infections have hematocrit more than 20% from baseline and a less blood because blood leaking out of blood vessels Complete blood count for dengue patients has a low white blood cell count usually, but a typical lymphocyte and lymphocyte in higher. White blood cell has a nuclei cell without hemoglobin. Its task is to prevent the spread of pathogen. By function, its two Characteristics include phagocyte and lymphocyte. In this method the main approach is efficient with respect to blood smear staining, the image size increasing, reduce magnification of the microscope to more sample of cell, more features will be supported to real using in the future that sub type of dengue virus.[7]

#### D. PROPOSED SYSTEM



**Fig 1: System Architecture**

The block diagram of the proposed system is given below in the system the microscopic image the input to the system. Then the preprocessing of the image is done for the enhanced the features of the image like resizing of Image and the gray conversion. The morphological operation is done on the image for smoothing the image quality then by using the SVM classifier we can detect the disease

#### V. CONCLUSION

A robust and novel method by utilizing cell phone for analyze malaria fever and dengue has been executed in this paper. By utilizing this technique we get the less time to give a finding when contrasted with other clinical research centers. The fundamental target of the examination is to effectively actualize the application on to the versatile stage without the loss of data trustworthiness, with negligible memory impression on the cell phone. The outcomes must be the same as the MATLAB yield, and in addition keeping to a satisfactory preparing pace and span. The exploration will concentrate on the advantages it can accommodate the effective analysis of malaria, dengue and the supportive treatment.

## VI. ACKNOWLEDGMENT

The creator might want to express extraordinary On account of V. S. Kulkarni for his important commitment in building up the ACCET format. Additionally I like say thanks to Head of Office Dr.S.K. Shah.

## REFERENCES

- [1]. V. V. Makkapatti and R. M. Rao, "division of intestinal sickness parasites in fringe blood spread pictures "Procedures of IEEE Universal Meeting on Acoustics Discourse and Flag Handling, I CASSP 2009, pp. 1361 - 1364, Apr. 2009.
- [2]. Ravi raja, g. Bajpai Also s. Sharma, "Examination of identifying those intestinal sickness parasite contaminated blood pictures utilizing measurable built Approocft " IFMBE Proceedings, third kuala lumpur universal gathering ahead biomedical building 2006,vol. 15,p craftsmanship 12,pp. 502-505,2007.
- [3] Abdul Nasir, A. S.; Res. Bunch, Univ. Malaysia Perlis, Arau, Malaysia Mashor, M.Y. , Mohamed, Z "Division based approach for location of intestinal sickness parasites utilizing moving k-implies grouping" 2012.
- [4]. Muda, T. Z. T, Sch. About media Technol. & Commun. , Univ. Utara Malaysia, Sintok, Malaysia; Salam, r. An. "Blood Mobile picture division utilizing mixture K-means and median-cut algorithms" 2011.
- [5]. Mandal,S. ; Sch. Of med. Sci. & Technol. , indian inst. For Technol. , Kharagpur, india ; Kumar, a. ; Chatterjee, j. ; Manjunatha "Segmentation for blood smear pictures utilizing normalized cuts for identification for malarial parasites" 2010.
- [6]. Halim, What's more, the lion's share of Corps parts don't stay in their starting work areas once their comm.; Sch. From claiming Comput. Eng. , Nanyang Technol. Univ. , Singapore; Bretschneider, t. ; Li, Y. ; Preiser, p. R. "Estimating intestinal sickness parasitemia starting with blood smear Images" 2006.
- [7]. Sarach Tantikittil, Sompong Tumswadi, Wichian Premchaiswadi doctoral level college for data improvement Siam school Bangkok, Thailand'image get ready to identification of dengue infection In view of WBC order What's more choice Tree'2015 Ict and taking in planning thirteen meeting.

